



FULL SAIL UNIVERSITY

HOUSING HANDBOOK

for International Students





IMPORTANT INFORMATION

The material enclosed in this guide is provided by Silver City Partners, Ltd. for informational purposes only and should not be construed as a recommendation or endorsement of any particular facility, management, staff, or service.

The information in Full Sail University's Housing Handbook for International Students is for informational purposes only. All prices mentioned in this guide are estimates and may change at any time, without notice.

All real estate advertised herein is subject to the Federal Fair Housing Act, which makes it illegal to advertise any preference, limitation or discrimination based on race, color, religion, sex, handicap, familial

status or national origin or intention to make any such preference, limitation or discrimination. We will not knowingly market any rental property which is in violation of the law. All persons are hereby informed that all dwellings contained herein are available on an equal opportunity basis.

Prices quoted are subject to change at the discretion of apartment owner/managers and are provided for information purposes only. Silver City Partners, Ltd., a licensed real estate broker, does not make any representations as to opinions and facts. All terms and conditions of rentals are subject to change. Projected costs of utilities are approximate and should not be construed as guaranteed monthly amounts when calculating monthly expenses as individual use will vary.

TABLE OF CONTENTS

PAGE 03 Choosing an Apartment

PAGE 07 Apartment Necessities and Student Services

PAGE 09 Housing Checklist

PAGE 10 Roommates

PAGE 14 Frequently Asked Questions

PAGE 16 International-friendly Apartments

PAGE 40 Title IV

PAGE 41 Area Retail

Welcome to Full Sail University! This relocation guide provides detailed information about your move to the Winter Park area, including international-friendly apartments, setting up utilities, finding a roommate, and more.

We know that international students have unique challenges when it comes to moving resources, so this guide should hopefully address many of your questions and concerns.

internationalenrollment@fullsail.com



CHOOSING AN APARTMENT

Full Sail does not have on-campus housing, but is located close to many area apartment complexes. You have the option of living alone, or you can find a roommate. Once your F-1 Visa has been approved, your International Enrollment Guide can provide you with a list. You can be added to the list by completing the roommate profile.

The apartments by Full Sail often include amenities such as swimming pools, tennis courts, laundry facilities, exercise facilities, and barbecue areas. The amenities for each complex are listed with their prices and layout information in this guide.



Visiting Apartment Complexes

If you have plans to visit Full Sail's campus, this is also a great opportunity to visit some of the apartment complexes you may be interested in. Apartments are available for viewing during normal business hours, usually without an appointment, and the office staff will be happy to show you the apartments and property amenities.



Applying for an Apartment and Signing a Lease

You will be required to sign a lease in order to move into your apartment. The term of this contract is normally 12 months in length, although shorter or longer leases may be available. Because you are legally and financially obligated to your apartment for the length of the lease, you will want to be sure that you pick your apartment and roommates very carefully. Ending your lease early can be very expensive, due to fees and loss of deposits, and should be avoided whenever possible.



Apartment Qualifications and Fees

You will need to qualify for your apartment. The apartment complex will ask you to provide:

- A copy of your passport
- Your I-20
- Your F-1 Visa
- **Financial guarantee** demonstrating 2 - 5x monthly rent in income.
Bank statements or pay stubs required.
(*Translated documents required*)

You will also be expected to pay for your application fees and a security deposit at the time you apply for your apartment. Deposits for international students are normally equal to one or two month's rent. This is because apartment complexes are unable to perform credit and background checks on international students who do not have a Social Security number.



Utilities and Furniture

In most cases, utilities and furniture are not included in the cost of your rent. You will need to add electricity, water/sewer and Internet services for your apartment. See Apartment Necessities and Student Services on Page 7.



Renters Insurance

It is strongly recommended that you acquire renters' insurance. Leases stipulate that in the event of a robbery, natural disaster, or other damage in your apartment, the complex is only responsible for the repairs to the building. Your personal possessions are not covered, and renters' insurance is usually a very inexpensive way to protect your personal possessions, including your laptop. You are also encouraged to contact your car insurance provider to see if they offer renters insurance and how their rates compare. See Apartment Necessities and Student Service for more information.



APARTMENT NECESSITIES AND STUDENT SERVICES

Utilities and Water/Sewer

In most cases, utilities and water/sewer are not included in the cost of your rent. The apartment complex will give you the name of those providers for you to set up on your own. There will be a deposit for those services as well.

Furniture

The apartments near Full Sail include a refrigerator, a stove/oven, a dishwasher, and some may include a washer and dryer. Most do not include furniture. You have the option of either purchasing furniture for your apartment or renting. [Cort Furniture](#) offers furniture rental services. To purchase furniture, see local stores such as Walmart, Ikea, and Target. See page 33 for full retail store listings.

Cell Phone Service

To avoid international charges on your phone plan, you can purchase prepaid phones from stores such as Walmart, or SIM cards from AT&T, Verizon or Mint Mobile. You can purchase a phone also from [AT&T](#), [Mint Mobile](#) or [Verizon](#).

Insurance

Insurance is not offered through Full Sail University; however, it is strongly recommended that students have basic health insurance coverage for medical expenses. [Affordable One](#) and [International Student Insurance](#) are two available options.



HOUSING CHECKLIST

- 1
 - ☐ Read this handbook and contact your International Enrollment Guide to discuss potential apartment complex options – as well as any other questions related to your transition.
- 2
 - ☐ Complete the roommate profile provided by your International Enrollment Guide to be added to the roommate list.
- 3
 - ☐ Discuss your living needs with your International Enrollment Guide.
- 4
 - ☐ Contact your apartment complex to complete the application process. They will tell you what documentation they require and help you determine your move-in date. All of your deposits and paperwork will be submitted directly to the apartment complex; your apartment is not reserved until you have submitted your application and necessary fees.
- 5
 - ☐ Contact your International Enrollment Guide to discuss your plans to arrive in Orlando, including how you will get from the airport to your hotel or apartment.
- 6
 - ☐ Update your International Enrollment Guide with your finalized travel plans to arrive in Orlando.
- 7
 - ☐ The week before you arrive, contact your apartment complex to verify that everything is in order for you to move in. If you do not have housing arrangements in place before you arrive, you will need to make arrangements to stay in a hotel.
- 8
 - ☐ Make arrangements for utilities and furniture for your apartment unless they are already included in the cost of your rent.

ROOMMATES

You always have the option of living alone; however, if you are interested in finding a roommate, Full Sail will be happy to assist you. Your I-20 must be issued before you can receive the roommate list. After your F-1 Visa is secured, you can be included on and receive the roommate list. Please speak with your International Enrollment Guide regarding completing a roommate profile and receiving a copy of the roommate list.



Looking for
a Roommate?

Email your International
Enrollment Guide to be
added to the roommate list.



Suggestions for Interviewing Potential Roommates

Selecting a roommate is a personal matter. Full Sail's only involvement in this process is to inform you of others who may also be seeking roommates and to pass on information from other students. We make no judgments as to whether or not someone would be a good roommate for you.

At Full Sail, you have the advantage of choosing your roommate, so prepare a list of questions. Some important things to talk about when considering someone as a roommate include:

- How will your roommate pay for their portion of the rent, utilities, and other living expenses? Openly discuss expectations and responsibilities so you are both on the same page.
- Discuss your personal and shared space expectations. Do you mind if your roommate comes into your room without permission to borrow something, or do you want your room to be strictly off-limits? Be sure to clearly define your boundaries.
- Talk about grocery shopping. Will you shop together and split the bill, or will you shop separately? Do you mind your roommate sharing your milk, potato chips, soda, etc.? Be specific in your requests.
- Discuss cleanliness. Most people think that they are average when it comes to tidiness, so be sure to define "average." For example, is it acceptable for dishes to be left in the sink overnight, or should they go in the dishwasher? Will there be a cleaning schedule for the common rooms of the house? How will the garbage duties be set up? Again, it is important to be specific.
- Talk about your social habits. Is it okay for your roommate to have parties in the apartment, or should the party be held elsewhere? Is it alright for your roommate to invite people to the apartment that you do not know? You should also discuss each other's needs for when you are studying and sleeping.
- Talk openly about recreational drugs, alcohol, smoking/vaping, and having significant others over at the apartment. If these things are not okay with you, be honest about it. This is not the time to compromise your personal feelings or beliefs on sensitive topics.
- Discuss all expectations that might compromise a friendly living relationship up front. It is much easier to prevent roommate problems before you move in together than it is to fix them afterward.

Also, when you are interviewing others, be sure to call and/or video chat with a potential roommate before deciding. Do not rely on email and text alone. You need to actually speak to the fellow student you are interviewing. This will help you get a better idea of what a person is really like.

Finally, don't be in such a hurry to find your roommate. This can be the longest process with your housing and relocation plans, and it should be. To give yourself plenty of time to interview and find the best roommate, it is important to have your financial tasks completed and confirmed by your International Enrollment Guide as soon as possible.

Questions to Consider for your Roommate Profile:

What is your nationality?

Do you have a pet?

Do you smoke?

Do you have a smoking preference? Smoking/non-smoking/no preference

Will you have a car?

Study Habits: scale of 1-10

Social Habits: scale of 1-10

List any hobbies/habits you have, sports/instruments you play, musical tastes, or any unique information about yourself.

Living with a Current Student

The International Team not only helps incoming students find roommates, but we also assist current students who need to find new roommates. You may receive a call from one of these students. If you are considering moving in with a student already attending Full Sail, here are a few things that you must keep in mind:

- You must be added to the lease with the current student. All apartment complexes (and even some private landlords) require that everyone who lives in the dwelling must be on the lease. If the complex finds that you are living in the apartment but not on the lease, then you will be given a short amount of time to apply and be approved to live there. Failure to do so will result in eviction of everyone in the apartment.
- The qualification process for being added to the lease is exactly the same as if you were applying for a new lease. You may be required to provide proof of income to be added to the lease.
- If you move in with a current student, there is a good chance that they will graduate before you do. This means that at some point during your studies, you will need to find a new roommate and possibly a new apartment.
- It is important for you to view the apartment that you are considering moving into before you sign the lease. As soon as you sign the lease, you immediately become responsible for half of any damage that was caused before you moved in. To be certain about the accommodations, arrange a video call with the current student to view the apartment you are considering moving into.

If you have any questions or concerns about anything that you have read here, please contact your International Enrollment Guide immediately to discuss them.

Rules and Regulations

APPLICATIONS

Application fees are paid directly to the apartment at the time you apply. Each person occupying the apartment must apply individually and pay a separate application fee, which is non-refundable. All applicants must qualify individually and meet the specific standards of the individual complex.

Proof of income will be required for all apartment complexes. Some students may require a cosigner even with proof of income. If you are granted admission into Full Sail University and have a criminal record, your acceptance into an apartment complex is not guaranteed.

Full Sail University does not provide student housing, and the final decision regarding acceptance in these cases rests solely with the apartment complex. If you feel that there may be negative information contained in the check, it is best to discuss this with the complex staff prior to submitting your application. If your application is denied, please contact the International Enrollment Guide.

LEASES

Leases are legal and binding contracts and should be taken seriously. Each apartment complex has published rules and regulations. Be advised that you may be evicted for nonpayment of rent or noncompliance with the rules and regulations. If for any reason you have to break your lease, contact the apartment complex immediately. In certain cases, we can offer assistance to you and your family; however, Full Sail University will not assume responsibility for your lease under any circumstances.

MOVING IN

Before receiving your keys from the leasing office, you will need to sign the lease and have move-in costs covered, and one of the residents will need to arrange to have the electricity activated in their name. Your move-in costs will include application fees, the security deposit, and the first month's rent, which will be prorated for the balance of the month. Depending on your move-in date, the second month's rent may be required as well.

MOVING OUT

Prior to moving out, you are typically required to give a 60-day written notice to your apartment manager that you plan to vacate the apartment. It will be your responsibility to return the keys to their office before you leave. You will be charged for each day that you keep the keys after your move-out date. Do not expect your deposit to be returned the same day you move out. You will need to leave a forwarding address where a check can be mailed to you. You also need to make arrangements to disconnect your various utilities and provide them with a forwarding address as well so they can mail your final bill to you.

FREQUENTLY ASKED QUESTIONS

QUESTION 1

- ? What is the average living expense amount for living alone?
What about with a roommate?**

Answer: Your cost of living can vary greatly based on your specific needs and options. Please contact your International Enrollment Guide to get a basic idea of area living expenses.

QUESTION 2

- ? Does a student have to wait until they receive their I-20 to start considering housing options?**

Answer: No – you should start your housing process as soon as possible. However, a student's I-20 needs to be sent before you can be added to the roommate list.

QUESTION 3

- ? Does a student need to have a vehicle to attend school?**

Answer: No, having a car is not necessary in order to attend school. Any student who does not have a vehicle should live within 1.5 miles of campus so that they can walk or bike to school. Keep in mind that the public transportation system, LYNX, does not operate 24 hours a day. The apartments listed below will have an icon indicating whether they are within walking distance, biking distance, or driving distance.

QUESTION 4

- ? Where should I stay if my move in date is after my arrival in the U.S.?**

Answer: If your apartment has not been secured by the time of your arrival, you will need to establish a temporary option. The International Enrollment Guide will be able to provide a listing of hotel recommendations.

QUESTION 5 //**? Do students need to have their housing secured before coming to registration?**

Answer: While it is not required for a student to secure housing before coming to registration, it is strongly suggested that they do so for the following reasons:

- Securing an apartment early by submitting an application and paying a hold fee is the best way for a student to ensure that they get his or her first apartment choice.
- Students need to provide a local address when they attend registration.
- Securing housing saves hotel costs. Also, there are no hotels that are within walking/biking distance of campus.
- Registration/orientation week is a very busy and hectic week for students. Participating in the required activities, meetings, and events during this week while trying to find and secure housing is a difficult task for any student, especially international students.
- Choosing a roommate may be challenging, since most students already have their housing and roommates secured before they arrive for registration.
- International students may need extra assistance to secure housing, because the process can be very different here as compared to the student's home country.

If you must wait until you come to campus to choose housing, you should arrive a week before registration so that you can take care of all of your housing arrangements before registration. You should also have hotel accommodations secured before you arrive.

QUESTION 6 //**? How do international students set up their utilities?**

Answer: While international students can set up utilities directly through the utility companies, this will almost always result in a large deposit, because deposits are based on credit and international students do not usually have Social Security numbers upon entering the country.

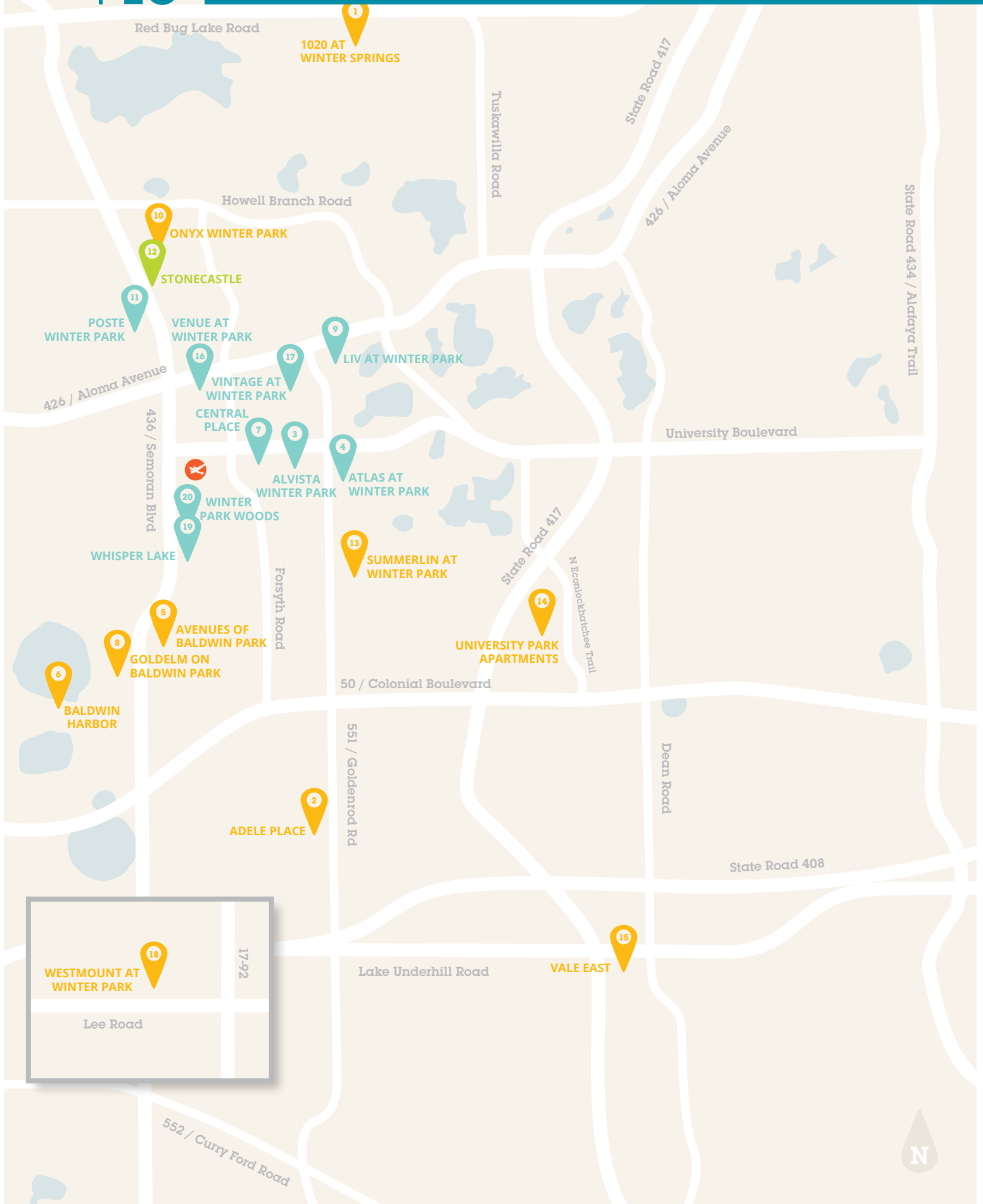
The company PaySmartUSA offers an option of bundling utilities such as electric, internet service, water and even furniture and kitchenware into one monthly bill. For additional information and a list of services, call 888.381.8020 or go to www.paysmartusa.com

QUESTION 7 //**? How can I find furniture for my apartment?**

Answer: You can either rent or buy furnishings for your apartment – See info on Cort Furniture rental or PaySmartUSA on Page 7 in the Apartment Necessities and Student Services section.

QUESTION 8 //**? How can I connect with other international students who are studying at Full Sail?**

Answer: Follow Full Sail's International Student Society (ISS) on Instagram, Facebook and Discord. @FullSail.ISS



International-friendly APARTMENTS



Car icon indicates the apartment is within driving distance.



Bike icon indicates the apartment is within biking distance.



Walker icon indicates the apartment is within walking distance.

The following list contains apartment complexes that are familiar with the needs of international Full Sail students:

- | | |
|--|--|
| <p> 1. 1020 at Winter Springs
page 18</p> | <p> 12. Stonecastle
page 29</p> |
| <p> 2. Adele Place
page 19</p> | <p> 13. Summerlin at Winter Park
page 30</p> |
| <p> 3. Alvista Winter Park
page 20</p> | <p> 14. University Park
page 31</p> |
| <p> 4. Atlas at Winter Park
page 21</p> | <p> 15. Vale east
page 32</p> |
| <p> 5. Avenues of Baldwin Park
page 22</p> | <p> 16. Venue at Winter Park
page 33</p> |
| <p> 6. Baldwin Harbor
page 23</p> | <p> 17. Vintage Winter Park
page 34</p> |
| <p> 7. Central Place
page 24</p> | <p> 18. Westmount at Winter Park
page 36</p> |
| <p> 8. Goldelm on Baldwin Park
page 25</p> | <p> 19. Whisper Lake
page 36</p> |
| <p> 9. LIV at Winter Park
page 26</p> | <p> 20. Winter Park Woods
page 37</p> |
| <p> 10. Onyx Winter Park
page 27</p> | <p>Homestay Anywhere
page 39</p> |
| <p> 11. Poste Winter Park
page 28</p> | |

**Prices are provided for reference only and may change based on availability, time of year, or other factors.
Please call complex for current pricing.*

1

1020 at Winter Springs

1020 Chatham Pines Cir., Winter Springs, FL 32708
407.699.6886

WEBSITE

www.1020atwinterspringsfl.com

UTILITIES AND FEATURES

- Washer/dryer included in every apartment
- Reserved parking available

AMENITIES

- Modern interior design
- Full-size closets
- Fireplace with mantel
- Exercise center
- Private patio
- Swimming pool
- Picnic and BBQ area
- Basketball court
- Business center

LOCATION

Located off of Goldenrod Rd., 4 miles south of campus

APPLICATION FEES

\$150 total application and administrative fee for Full Sail students

MOVE-IN COSTS

\$300 (refundable) security deposit for Full Sail students

PET DEPOSITS / FEES

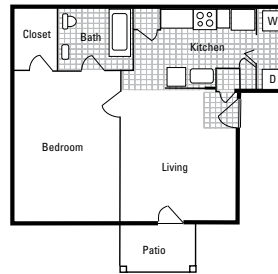
\$400 (non-refundable) pet fee per pet; Maximum of 2 pets; \$20/month pet rent per pet; 75 lb. weight limit; Breed restrictions apply

ADDITIONAL INFORMATION

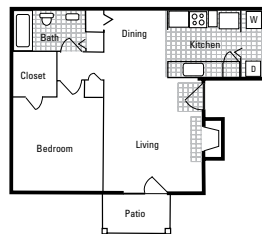
Mention this ad for Full Sail specials

HOURS

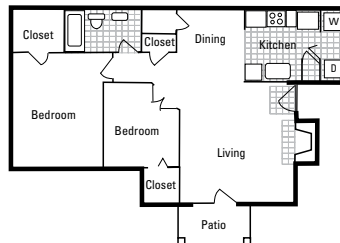
M-F	10 to 5	Sat	10 to 5
		Sun	Closed



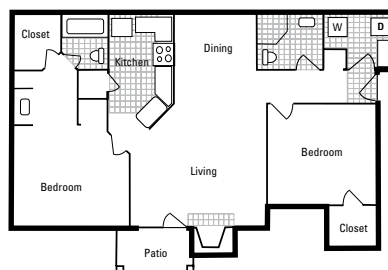
1 BEDROOM
1 Bedroom, 1 Bath
580 sq. ft.
Starting at \$1267



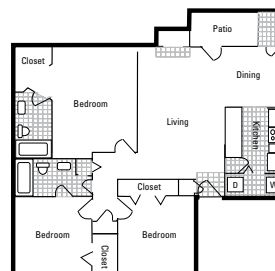
1 BEDROOM
1 Bedroom, 1 Bath
660 sq. ft.
Starting at \$1336



2 BEDROOM
2 Bedroom, 1 Bath
810 sq. ft.
Starting at \$1520



2 BEDROOM
2 Bedroom, 2 Bath
1000 sq. ft.
Starting at \$1620



3 BEDROOM
3 Bedroom, 2 Bath
1150 sq. ft.
Starting at \$2098

2

Adele Place

7595 Sun Tree Cir., Orlando, FL 32807
+1.407.362.6511 +1.407.658.9473 fax

WEBSITE AND EMAIL

www.adeleplaceorlando.com
adele_place@aspensquare.com

UTILITIES AND FEATURES

- Water/sewer/trash not included in rent
- Washer/dryer included in every apartment

AMENITIES

- Resort-style pool with Wi-Fi
- Sports center with basketball court and X-Fit gym
- Dog park
- Tennis court
- 24-hour fitness center
- Internet café

LOCATION

Located off of Goldenrod Rd., 4 miles south of campus

FINANCIAL QUALIFICATION

Guarantor to provide bank statements or pay stubs to prove income is 2.5 times the monthly rent or above

APPLICATION FEES

\$100 (50% off for Full Sail students) and \$200 Administration fee

SECURITY DEPOSITS

Starting at \$400 (refundable)

PET DEPOSITS / FEES

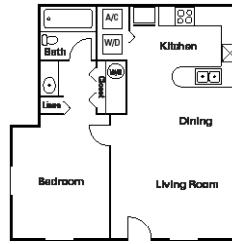
\$300–500 pet fee, up to 2 pets
\$20–30/month pet rent

ADDITIONAL INFORMATION

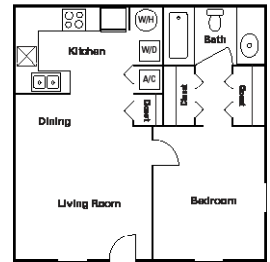
Administrative fee waived for Full Sail students
Full Sail special—\$100 off first month
Furniture rental available
Credit cards accepted with a \$20 fee per transaction

HOURS

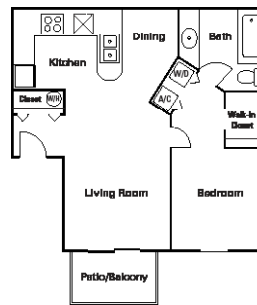
M–F 8 to 5:30, Sat 10 to 4



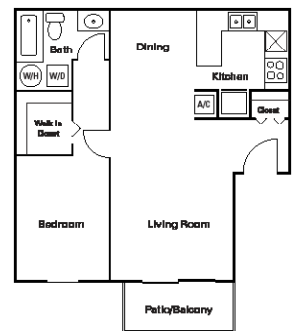
ROYAL
1 Bedroom, 1 Bath
550 sq. ft.
Starting at \$1315



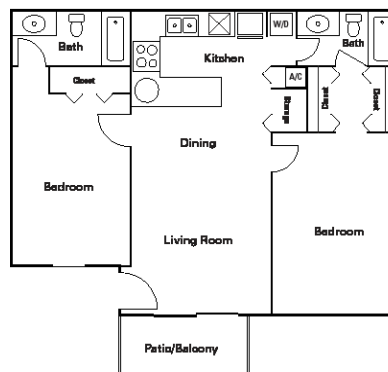
CAROLINA
1 Bedroom, 1 Bath
567 sq. ft.
Starting at \$1320



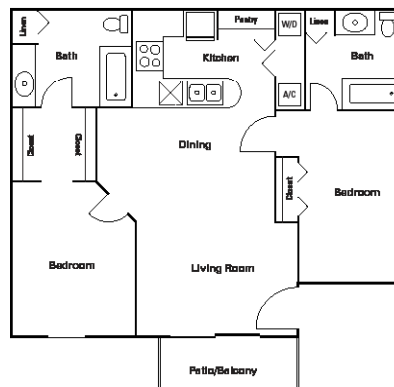
BELLA
1 Bedroom, 1 Bath
658 sq. ft.
Starting at \$1460



CAPE
1 Bedroom, 1 Bath
792 sq. ft.
Starting at \$1475



TUSCANY
2 Bedroom, 2 Bath
927 sq. ft.
Starting at \$1700



GRANDE
2 Bedroom, 2 Bath
938 sq. ft.
Starting at \$1645

3

Alvista Winter Park

3935 Sutton Place Boulevard, Winter Park, FL 32792
+1.407.657.2299 +1.407.657.0295 fax

WEBSITE AND EMAIL

www.alvistawinterpark.com
alvistawinterpark@lincolnhpts.com

AMENITIES

- 24-hour gated community
- 24-hour state-of-the-art fitness center
- Washer/dryer included in the Beechnut and Destiny floor plans
- 2 sparkling pools
- Dog park
- Every unit includes: two-tone paint, patio with storage, walk-in closets, breakfast bar, designer ceiling fans, tile backsplash, microwave
- 24-hour emergency maintenance
- Business center with high-speed Internet
- Water/sewer not included in rent

LOCATION

Located on University Blvd., approximately 0.25 miles east of campus

FINANCIAL QUALIFICATION

No longer requires a financial guarantee. Only one-month security deposit.

APPLICATION FEES

\$75 per applicant, \$200 Administration fee

SECURITY DEPOSITS

One month rent for security deposit

PET DEPOSITS / FEES

\$325-525 (non-refundable)
Breed restrictions apply / No size restrictions
Maximum 2 pets
\$20/month pet rent per animal

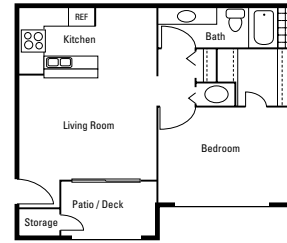
ADDITIONAL INFORMATION

Additional amenities available in select units include: wood-plank flooring, lake views and stainless appliances (additional charges may apply)

HOURS

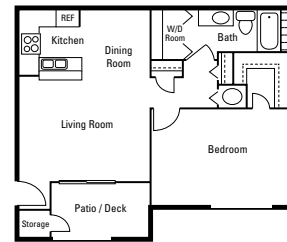
M-F 9 to 6, Sat 10 to 5, Sun Closed

*Prices change daily based on current market availability. Please call apartment staff for current pricing. Refer to important information section at the front of the guide.



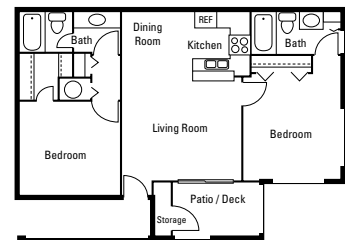
AMELIA

1 Bedroom, 1 Bath
675 sq. ft.
Starting at \$1400*



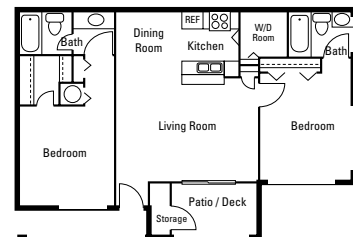
BEECHNUT

1 Bedroom, 1 Bath
837 sq. ft.
Starting at \$1500*



CAMELIA

2 Bedroom, 2 Bath
940 sq. ft.
Starting at \$1700*



DESTINY

2 Bedroom, 2 Bath
1042 sq. ft.
Starting at \$1800*

4

Atlas at Winter Park

3733 N. Goldenrod Rd., Winter Park, FL 32792
407.677.7070 407.657.5875 fax

WEBSITE

www.liveatlasatwinterpark.com

UTILITIES AND FEATURES

- Water/trash/sewer not included in rent
- Pest control included in rent
- Trash \$10/month
- Full-size washer/dryer in every apartment
- Renters insurance required— in-house policy available for \$16/month

AMENITIES

- Gated 24 hours/day
- 2 sparkling pools with sundecks
- Newly renovated 24-hour fitness center
- Lighted tennis court
- Playground
- Picnic areas
- Wi-Fi at the clubhouse pool
- Fireplaces in select units

LOCATION

Located on Goldenrod Rd., 1 mile east of campus

FINANCIAL QUALIFICATION

Guarantor to provide bank statements or pay stubs to prove income is 4 times the monthly rent.

APPLICATION FEES

\$75 application fee per applicant
\$200 administration fee per household.

SECURITY DEPOSITS

Jetty Surety Bond based on income.

PET DEPOSITS / FEES

\$435 pet fee per pet, up to 2 pets
\$25/month pet rent
No aggressive breeds permitted

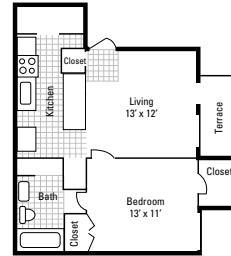
ADDITIONAL INFORMATION

Additional amenities available in select units include: wood-plank flooring, lake views and stainless appliances (additional charges may apply)

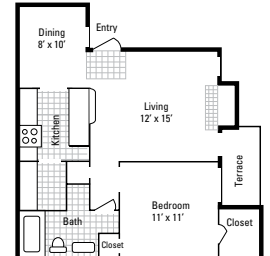
HOURS

M–F 10 to 5, Sat 10 to 5, Sun Closed

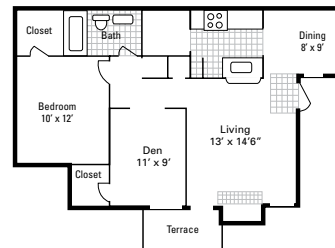
*Prices change daily based on current market availability. Please call complex for current pricing. Refer to Apartment Information section at the front of the guide for more info



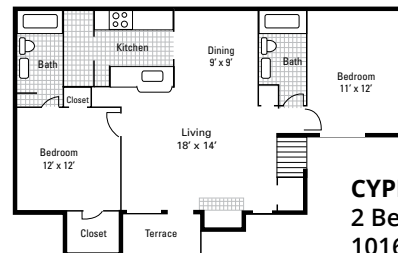
PALM
1 Bedroom, 1 Bath
579 sq. ft.
\$1263–1358*



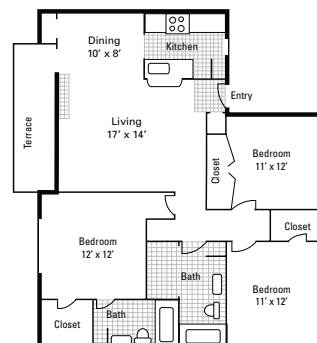
BEECHNUT
1 Bedroom, 1 Bath
657 sq. ft.
\$1318–1610*



ASPEN
1 Bedroom,
1 Bath w/Den
808 sq. ft.
\$1494–1718*



CYPRESS
2 Bedroom, 2 Bath
1016 sq. ft.
\$1640–2100*



WILLOW
3 Bedroom, 2 Bath
1150 sq. ft.
\$2191–2466*

5

Avenues of Baldwin Park

5800 Auvers Blvd., Orlando, FL 32807
407.671.0200 407.671.0968 fax

WEBSITE AND EMAIL

www.avenuesbaldwinpark.com
baldwinpark@hrpliving.com

UTILITIES AND FEATURES

- Water/sewer/trash not included in rent
- Washer/dryer included in every apartment
- Valet trash \$32/month
- Required Internet/cable package \$99/month
- Pest control \$7/month
- Liability insurance required \$24.99/month

AMENITIES

- Courtesy officers on-site
- Newly remodeled clubhouse with billiard room open during business hours
- 3 swimming pools with outdoor kitchens
- Soccer field with track and basketball court
- Bark park
- 24-hour fitness center
- 24-hour emergency maintenance
- Amazon locker room
- Brand-new playground
- Screened patios and storage in all units
- Townhome-style floor plans in select units
- Partially and fully renovated apartments available

LOCATION

Located off of Semoran Blvd., 1.6 miles south of campus

APPLICATION FEES

\$79 per applicant/guarantor

MOVE-IN COSTS

\$250 administrative fee; Up to 2 month's rent security deposit based on credit or \$650 flat fee

PET DEPOSITS/FEES

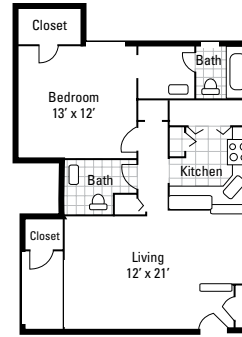
\$350-500 pet fee, up to 2 pets; \$25/month pet rent per pet; Breed restrictions apply

ADDITIONAL INFORMATION

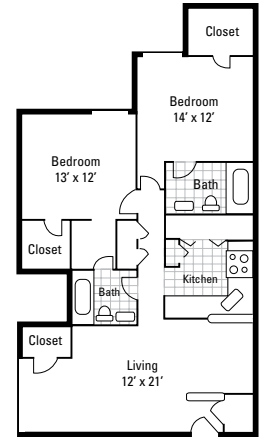
Online rent payments with checking/debit or credit card

HOURS

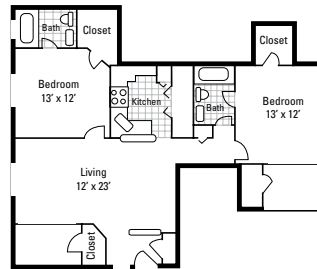
M-F	9 to 6	Sat	10 to 4
		Sun	Closed



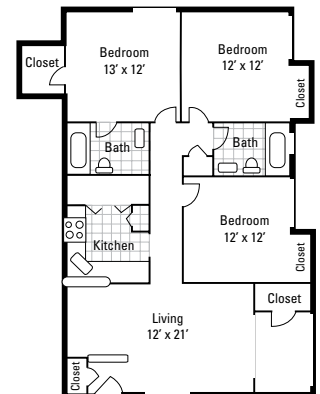
THE FERN
1 Bedroom, 1½ Bath
784 sq. ft.
STARTING AT \$1270*



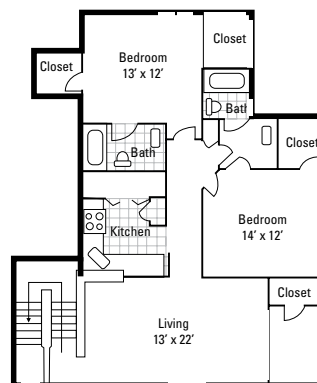
THE ANSON
2 Bedroom, 2 Bath
1023 sq. ft.
STARTING AT \$1412*



THE PARK
2 Bedroom, 2 Bath
1030 sq. ft.
STARTING AT \$1412*



THE MEETING
3 Bedroom, 2 Bath
1141 sq. ft.
STARTING AT \$1862*



THE UNION
2 Bedroom, 2 Bath
1163 sq. ft.
STARTING AT \$1862*

**Prices change daily based on current market availability. Please call complex for current pricing. Refer to Apartment Information section at the front of the guide for more info.*

6

Baldwin Harbor

1780 Welham Street Orlando, FL 32814
+1.407.745.4204

WEBSITE AND EMAIL

www.baldwinharbororlando.com
baldwinharbor@zrsmanagement.com

AMENITIES

- two resort style pools,
- clubhouse,
- outdoor lounges,
- yoga courtyard,
- dog spa,
- Two 24 hour fitness and cardio centers,
- garage parking and controlled building access
- Parking: 1 & 2bedrooms come with one spot in the garage, 3 bedrooms come with 2 spots in the garage. Additional spot is \$75/month.

LOCATION

Located in Baldwin park, 3 miles south of campus

FINANCIAL QUALIFICATION

Bank statements or pay stubs to prove 4 times the monthly rent for guarantor.

APPLICATION FEES

\$75 per applicant, \$250 Administration fee

SECURITY DEPOSIT

A minimum of \$1,000 up to 1 month's rent based on proof of income/guarantor income.

PET DEPOSITS / FEES

\$400 pet fee (per pet), \$20/ month pet rent (per pet)

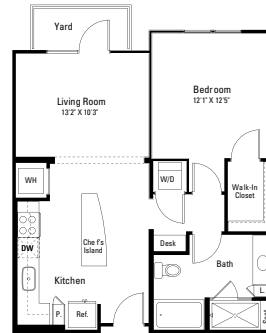
ADDITIONAL INFORMATION

Flat rate for water: \$45-55, depending on apartment size

Furniture rental available

HOURS

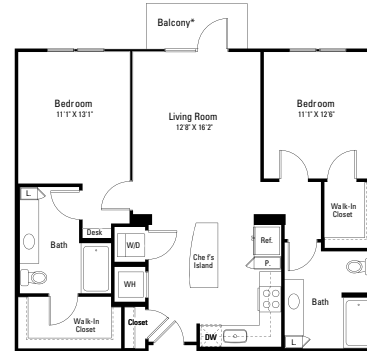
M-F 10 to 6, Sat 10 to 5, Sun 1 to 4



A1
1 Bedroom, 1 Bath
755 sq. ft.
Starts at \$1867

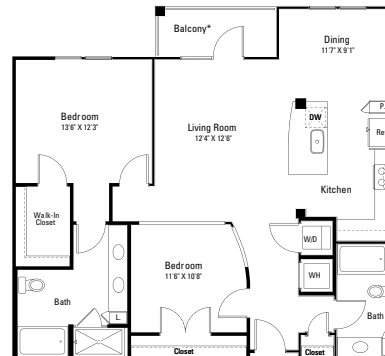


A2
1 Bedroom, 1 Bath
647-668 sq. ft.
Starts at \$2030



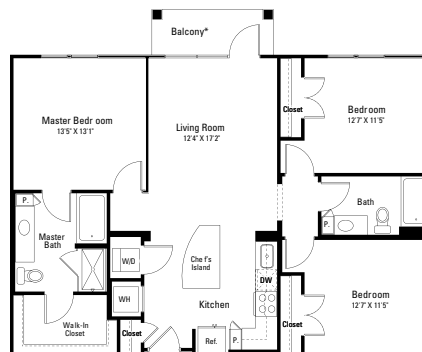
B1
2 Bedroom, 2 Bath
1077 sq. ft.
Starts at \$2568

*1" floor units include private yards



B3
2 Bedroom, 2 Bath
1208 sq. ft.
Starts at \$2747

*1" floor units include private yards



C1
3 Bedroom, 2 Bath
1257 sq. ft.
Starts at \$3673

*1" floor units include private yards

7

Central Place

7000 University Boulevard
Winter Park, FL 32792

+1.407.678.2662 +1.407.677.5591 fax

WEBSITE

centralplaceatwinterpark.com

centralplace@robbinsre.com

AMENITIES

- 24-hour lounge with free Wi-Fi
- Computer lab
- 2 sparkling pools
- Newly renovated fitness center
- Washer/dryer connections in all 2- and 3-bedroom apartments
- 2 basketball courts on site
- 2 laundry facilities
- Patios or balconies

LOCATION

Located on University Blvd., 0.25 miles east of campus

FINANCIAL QUALIFICATION

Bank statements or pay stubs to prove income 4 times the monthly rent.

APPLICATION FEES

\$25 application fee for students,
\$175 Administration fee

SECURITY DEPOSITS

Up to 2 times rent depending on based on proof of income/guarantor income.

PET DEPOSITS / FEES

\$200-400 (refundable) pet deposit
\$100-250 (non-refundable) pet fee
\$10/month pet rent
Maximum 2 pets; combined weight must be 100 lb. or less fully grown
Breed restrictions apply

ADDITIONAL INFORMATION

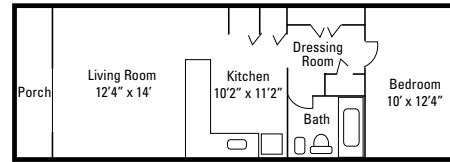
Flat rate for water: \$59-77, depending on apartment size

Furniture rental available

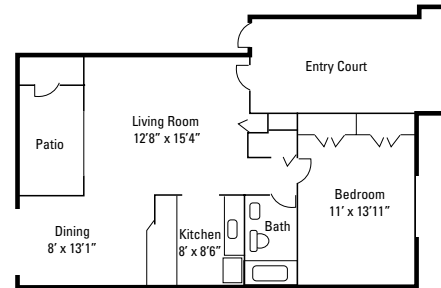
HOURS

M-F 9 to 6, Sat 10 to 5, Sun Closed*

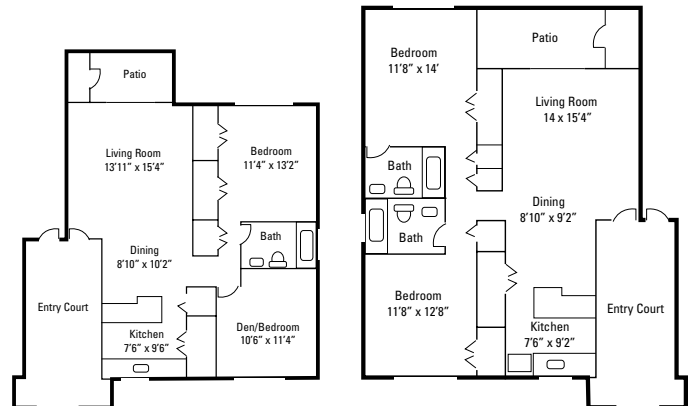
*Prices change daily based on current market availability. Please call complex for current



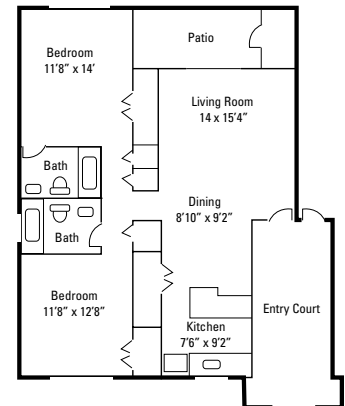
A1
1 Bedroom, 1 Bath
550 sq. ft.
Starting at \$1095



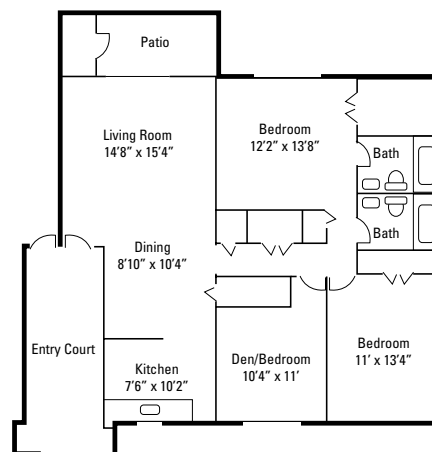
A2
1 Bedroom, 1 Bath
712 sq. ft.
Starting at \$1185



B1
2 Bedroom, 1 Bath
911 sq. ft.
Starting at \$1395



B2
2 Bedroom, 2 Bath
987 sq. ft.
Starting at \$1520



C1
3 Bedroom, 2 Bath
1178 sq. ft.
Starting at \$1720

8

Goldelm on Baldwin Park

5590 Baldwin Park St., Orlando, FL 32807
407.678.2100 407.678.2245 fax

WEBSITE

www.goldelm.com
baldwin.park@goldelm.com

UTILITIES AND FEATURES

- Water/sewer not included
- Washer/dryer in select units

AMENITIES

- Stainless steel appliances, including microwave
- Ultramodern fixtures and lighting
- Wood-inspired flooring
- 3 swimming pools with resort-style sun decks
- Pet-friendly community with "bark park"
- 2 on-site laundry facilities
- Private entrance to Cady Way Trail
- 24-hour state-of-the-art fitness center
- 24-hour Internet café with Wi-Fi printer
- Granite countertops

LOCATION

Located off of Semoran Blvd.,
1.4 miles south of campus

FINANCIAL QUALIFICATION

Bank statements or pay stubs to prove income 4
times the monthly rent

APPLICATION FEES

\$50 per person—waived for Full Sail students
\$150 administrative fee

SECURITY DEPOSITS

\$75 application fee, \$200 administration fee

PET DEPOSITS / FEES

\$300–500 pet fee, up to 2 pets
\$15/month pet rent per pet
Breed restrictions apply

ADDITIONAL INFORMATION

Renters insurance is required

HOURS

M–F 9 to 6, Sat 10 to 5, Sun 1 to 5

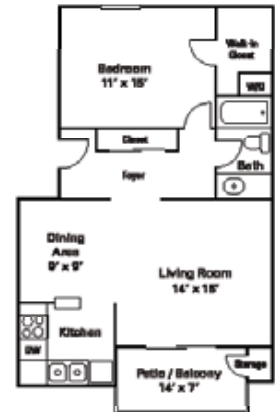
EXECUTIVE STUDIO

1 Bedroom, 1 Bath
518 sq. ft.
Starting at \$852



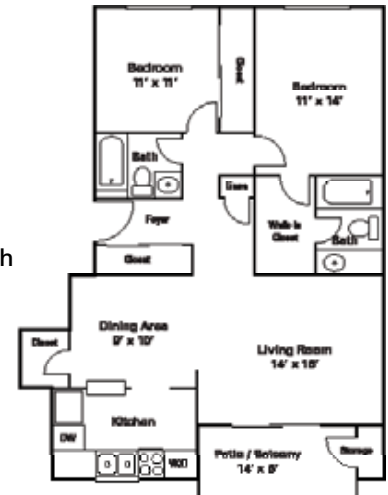
DELUXE ONE BEDROOM

1 Bedroom, 1 Bath
805 sq. ft.
Starting at \$1109



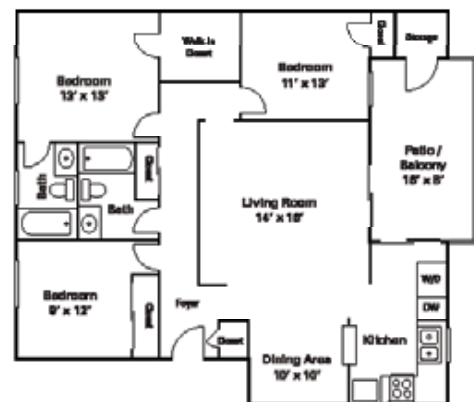
PARK AVENUE

3 Bedroom, 2 Bath
1178 sq. ft.
Starting at \$1272



TOWNHOUSE

(NOT PICTURED)
2bedroom, 1 1/2 Bath
1034 sq. ft.
Starting at \$1272



THREE BEDROOM

3 Bedroom, 2 Bath
1263 sq. ft.
Starting at \$1582

9

LIV at Winter Park

4755 N. Goldenrod Rd.
Winter Park, FL 32792
407.790.7508

WEBSITE

www.livatwinterpark.com
leasing@livatwinterpark.com

UTILITIES AND FEATURES

- Water/sewer not included in rent
- Washer/dryer included in every apartment
- Valet trash \$30/month
- Trash removal \$15/month
- Amazon hub lockers \$10/month
- Pest control \$7/month
- Renters insurance required

AMENITIES

- White sand beach on Lake Nan
- 2 swimming pools
- Business center
- Fitness center
- Dog park
- Tennis court

LOCATION

Located off of Goldenrod Rd., 1.65 miles northeast of campus

APPLICATION FEES

\$75 (non-refundable) application fee—half off for Full Sail students; \$250 (non-refundable) administration fee—half off for Full Sail students

MOVE-IN COSTS

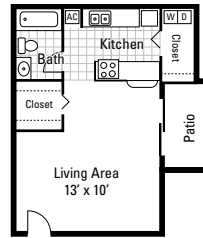
\$200–400 (refundable) security deposit based on apartment; Up to \$750 cap on security deposit based on credit

PET DEPOSITS / FEES

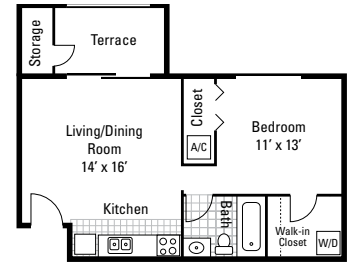
\$300 (non-refundable) pet fee per pet
\$25/month pet rent per pet

HOURS

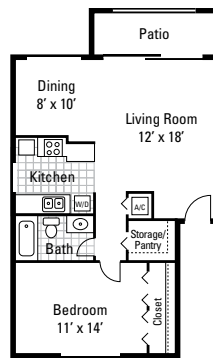
M–F	10 to 6	Sat	10 to 5
		Sun	Closed



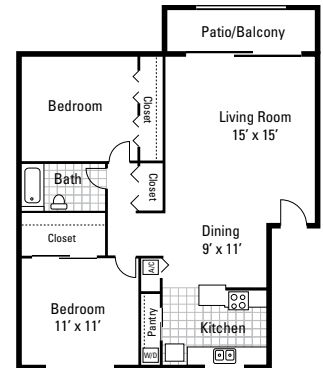
E1
Studio
500 sq. ft.
STARTING AT \$1289*



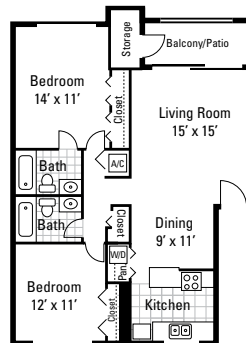
A1
1 Bedroom, 1 Bath
533 sq. ft.
STARTING AT \$1281*



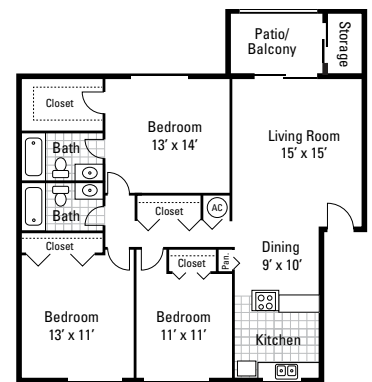
A2
1 Bedroom, 1 Bath
721 sq. ft.
STARTING AT \$1325*



B1
2 Bedroom, 1 Bath
912 sq. ft.
STARTING AT \$1413*



B2
2 Bedroom, 2 Bath
967 sq. ft.
STARTING AT \$1588*



C1
3 Bedroom, 2 Bath
1189 sq. ft.
STARTING AT \$2032*

*Prices change daily based on current market availability. Please call complex for current pricing. Refer to Apartment Information section at the front of the guide for more info.

10

Onyx Winter Park

100 Reflections Cir., Casselberry, FL 32707
321.334.5112

WEBSITE AND EMAIL

www.liveatonyx.com

onyxwinterpark006@newapthome.com

UTILITIES AND FEATURES

- Valet trash/pest control/package locker/bulk trash \$40/month
- Internet/cable package \$99/month
- Washer/dryer included in select apartments
- Covered parking available for \$25/month
- Renters insurance required

AMENITIES

- Dog park
- Pool
- Fitness center
- Pet spa
- BBQ/picnic area
- Covered parking
- Playground
- On-site app- and card-operated laundry facility
- Valet trash

LOCATION

Located off of Semoran Blvd., 2.9 miles north of campus

FINANCIAL QUALIFICATIONS

Bank statements or pay stubs to prove income 5 times the monthly rent

APPLICATION FEES

\$99 total application and administration fee for 1 applicant. \$149 total application and administration fee for 2 applicants. \$100 off approval fee for Full Sail Students. \$399 - \$799 (non-refundable) Approval fee depending on guarantor income and unit.

SECURITY DEPOSIT

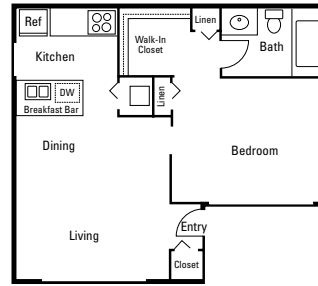
Up to one month's rent depending on unit and proof of income

PET DEPOSIT/FEES

\$300 pet fee for 1 pet; \$500 pet fee for 2 pets
\$25/month pet rent
No breed restrictions

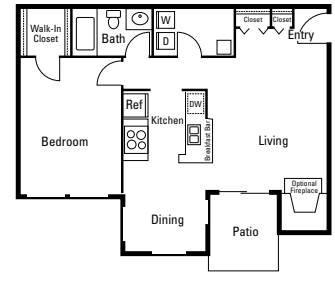
HOURS

M-F 9 to 6 Sat 10 to 5
Sun Closed



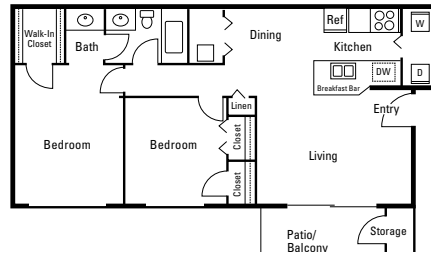
A1

1 Bedroom, 1 Bath
460 sq. ft.
\$1430-1530*



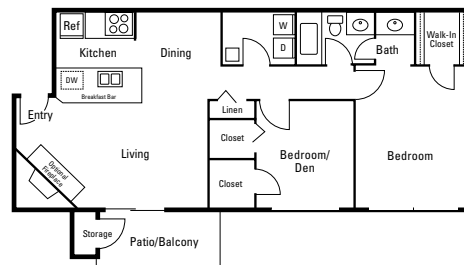
A2

1 Bedroom, 1 Bath
684 sq. ft.
\$1510-1610*



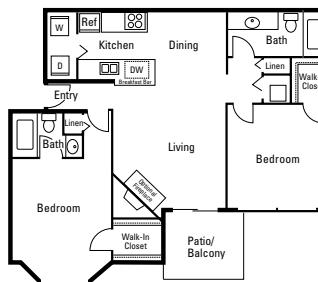
B1

2 Bedroom, 1 Bath
818 sq. ft.
\$1735-1835*



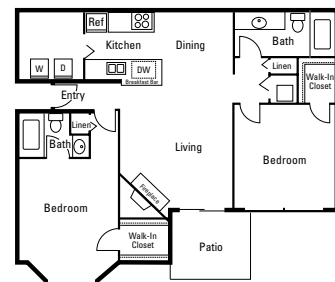
B2

2 Bedroom, 1 Bath
887 sq. ft.
\$1835-1905*



B3

2 Bedroom, 2 Bath
950 sq. ft.
\$1900-1965*



B4

2 Bedroom, 2 Bath
998 sq. ft.
\$1940-2040*

11

Poste Winter Park

800 Semoran Park Dr., Winter Park, FL 32792
407.618.7215

WEBSITE AND EMAIL

www.soliswinterparkflorida.com
poste@aspensquare.com

AMENITIES

- Stainless steel appliances
- Sparkling swimming pool
- Private patios/balconies
- Wood-style flooring
- Walk-in closets
- 24-hour maintenance

LOCATION

Located off of Semoran Blvd.,
1.2 miles north of campus

FINANCIAL QUALIFICATION

Requires 3x monthly rent in proof of income from
bank statement/paystubs

APPLICATION FEES

\$100 per applicant/guarantor-half off for Full Sail
Students. \$100 reservation fee, \$200 Administrative
fee-half off for Full Sail students.

SECURITY DEPOSIT

Starting at \$300 to one month's rent deposit based on
proof of income/guarantor income.

PET DEPOSITS / FEES

\$250 (non-refundable) pet fee per pet
Maximum 2 pets
\$20/month pet rent per pet
Breed restrictions apply

ADDITIONAL INFORMATION

Full Sail special—\$100 off first month

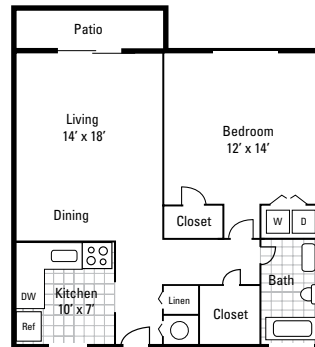
HOURS

M–F 8 to 5:30, Sat 10 to 4, Sun closed

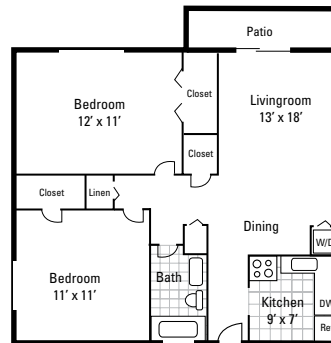
*Prices change daily based on current market availability. Please call
apartment staff for current pricing. Refer to important information
section at the front of the guide.



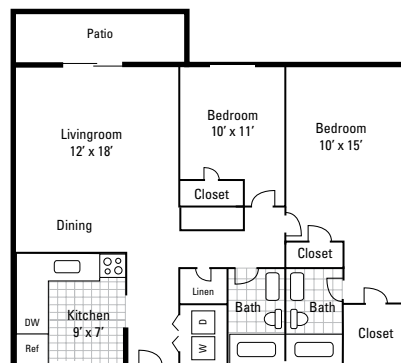
ONE BEDROOM
1 Bedroom, 1 Bath
710 sq. ft.
Starting at \$1620



ONE BEDROOM
1 Bedroom, 1 Bath
810 sq. ft.
Starting at \$1645



TWO BEDROOM
2 Bedroom, 1 Bath
950 sq. ft.
Starting at \$1785



TWO BEDROOM
2 Bedroom, 2 Bath
1050 sq. ft.
Starting at \$1905

12

Stonecastle

2016 New Stonecastle Terrace, Winter Park, FL
32792

+1.407.599.4120 +1.407.599.4121 fax

WEBSITE & EMAIL

www.bhmanagement.com

stonecastle@bhmanagement.com

AMENITIES

- Washer/dryer included
- Gated community
- Networked computer outlets
- 24-hour fitness studio
- Detached garages/storage available
- Picnic and barbecue area
- Resort-style pool
- 24-hour business center
- Planned resident activities
- Clubhouse with coffee café
- Tennis court
- Valet trash service
- Water/sewer not included in rent

LOCATION

Located off of Greencastle Blvd., 2 miles north of campus

FINANCIAL QUALIFICATION

Requires 6x monthly rent in proof of income from bank statement/paystubs

APPLICATION FEES

\$75 application fee, \$200 non-refundable administrative fee

SECURITY DEPOSIT

\$400-\$750 refundable based on income or \$200- \$375 (non-refundable) based on income.

PET DEPOSITS / FEES

\$200 For first pet
\$150 for second pet
Additional rent: \$20/month ; \$10/month for second pet
Up to 2 pets allowed per apartment home

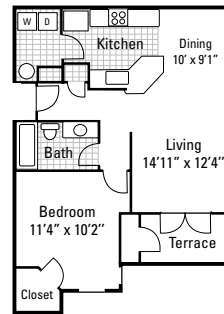
ADDITIONAL INFORMATION

Garages—\$75/month
Additional storage—\$20/month
Prices based on availability and are subject to change
Full Sail specials: \$100 off administrative fee;
\$100 off security deposit
Renters insurance is required
Call apartment complex for specials

HOURS

M, W 10 to 6; T, Th, F 9 to 6; Sat 10 to 5; Sun closed

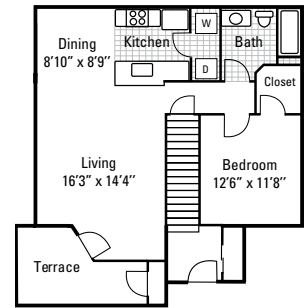
*Prices change daily based on current market availability. Please call apartment staff for current pricing. Refer to important information section at the front of the guide.



THE ASHLAR

1 Bedroom, 1 Bath
780 sq. ft.

Starting at \$1300-1500*



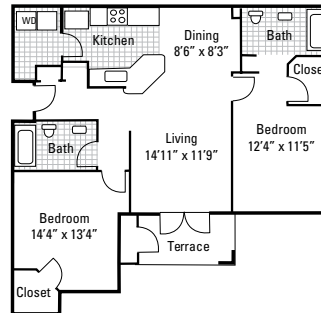
THE BELFRY

1 Bedroom, 1 Bath
DOWNSTAIRS: 760 sq. ft.

\$1300-1500*

UPSTAIRS: 830 sq. ft.

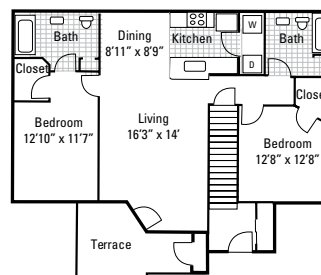
\$1300-1500*



THE LANCE

2 Bedroom, 2 Bath
1059 sq. ft.

\$1600-1800*



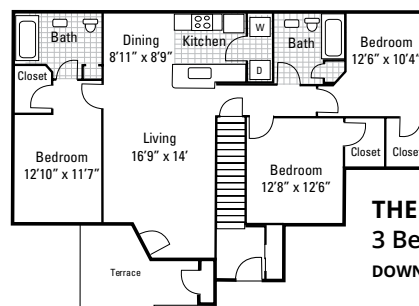
THE PALISDALE

2 Bedroom, 2 Bath
DOWNSTAIRS: 1071 sq. ft.

\$1385-1450*

UPSTAIRS: 1141 sq. ft.

\$1450-1500*



THE CHESHIRE

3 Bedroom, 2 Bath
DOWNSTAIRS: 1230 sq. ft.

\$1700-1900*

UPSTAIRS: 1330 sq. ft.

\$1750-1950*

13

Summerlin at Winter Park

3207 Rosebud Ln., Winter Park, FL 32792
407.678.5611 407.678.8210 fax

WEBSITE AND EMAIL

www.summerlinatwinterpark.com
summerlin@cmcapt.com

UTILITIES AND FEATURES

- Water/sewer not included in rent
- Trash/pest control included in rent
- Washer/dryer available in select apartments
- Furnished units for an additional \$150/month* (based on availability)

AMENITIES

- Furnished units available*
- Gated community with perimeter fencing
- Clubhouse with pool table and 65" TV open during business hours
- 24-hour laundry facilities
- Picnic area and grill
- State-of-the-art fitness center
- Resort-style swimming pool and spa
- Dog park

LOCATION

Located off of N. Goldenrod Rd., 1.8 miles southeast of campus

APPLICATION FEES

\$50 per applicant/guarantor—waived for Full Sail students

MOVE-IN COSTS

\$135 (refundable) administration fee

\$0 to 1 and a half month's rent (refundable) security deposit with approved credit or apply with Obligo for security deposit

PET DEPOSIT/FEES

\$350–500 (non-refundable) pet fee; \$35/month pet rent per pet; maximum of 2 pets; Breed restrictions apply

ADDITIONAL INFORMATION

Full Sail students unable to secure living expenses will be allowed to cancel an apartment reservation without penalty

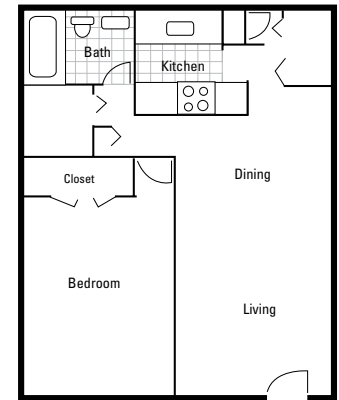
HOURS

M–F	9 to 5:30	Sat	10 to 4
		Sun	Closed

AQUA

1 Bedroom, 1 Bath
723 sq. ft.

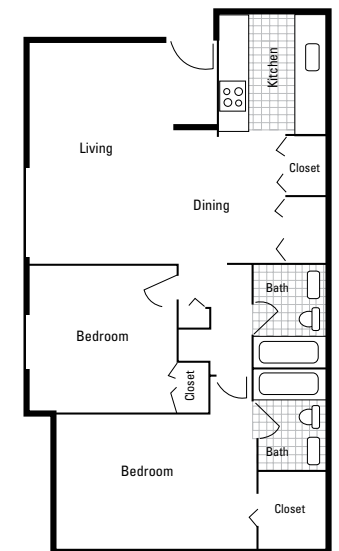
STARTING AT \$1366*



GARDENIA

2 Bedroom, 2 Bath
980 sq. ft.

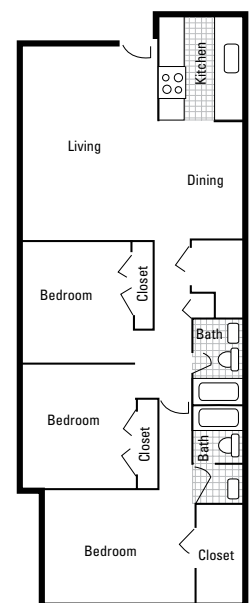
STARTING AT \$1431*



SUNSHINE

3 Bedroom, 2 Bath
1232 sq. ft.

STARTING AT \$1894*



**Prices change daily based on current market availability. Please call complex for current pricing. Refer to Apartment Information section at the front of the guide for more info.*

14

University Park Apartments

9201 Nelson Park Cir., Orlando, FL 32817
833.351.4483

WEBSITE AND EMAIL

<https://universityparkapartments.com>
leasing@universityparkapartments.com

UTILITIES AND FEATURES

- Water/sewer/gas not included in rent
- Valet trash \$27.50/month
- Pest control \$3/month; \$3.99/month service charge
- Washer/dryer in every apartment
- Renters insurance required—liability coverage \$14/month
- Deposit waiver \$31/month

AMENITIES

- Dog park
- BBQ grills/picnic area
- Pool with gazebo area and lounge chairs
- Fitness center
- Playground
- Coffee bar with snacks
- E-lounge with Mac computers and unlimited printing

LOCATION

Located off of N. Eonlockhatchee Tr., 4.1 miles southeast of campus

FINANCIAL QUALIFICATIONS

Bank statements or pay stubs to prove 2.5 times the monthly rent based on proof of income /guarantor income.

APPLICATION FEES

\$85 per applicant – waived for Full Sail students, \$250 administration fee

SECURITY DEPOSIT

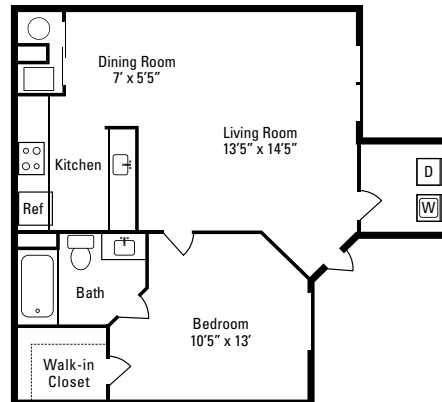
3 times rent per household (deposit can be shared by multiple renters).

PET DEPOSIT/FEES

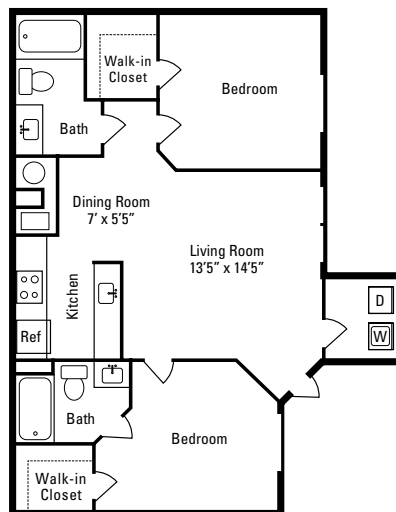
\$350–500 (non-refundable) pet fee
\$35/month pet rent per pet; maximum of 2 pets
Breed restrictions apply

HOURS

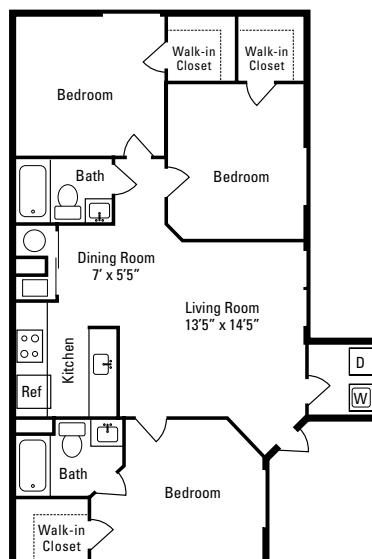
M–F 9 to 6; Sat 10 to 5; Sun 1 to 5



AZALEA
1 Bedroom, 1 Bath
645 sq. ft.
Starting at \$1360*
\$75 flat rate for gas



BALDWIN
2 Bedroom, 2 Bath
881 sq. ft.
Starting at \$1534*
\$90 flat rate for gas



CANAVERAL
3 Bedroom, 2 Bath
1,043 sq. ft.
Starting at \$1674*
\$95 flat rate for gas

15

Vale East

9010 Running Bull Road, Orlando, FL 32825

321.541.4799 321.541.4913

WEBSITE AND EMAIL

<https://valeeast.com> leasing@valeeast.com

UTILITIES AND FEATURES

- Electricity/water/sewer/Internet included in rent—\$150 cap per apartment
- Renters insurance required
- Washer/dryer included in all apartments
- Valet trash \$10/month per person
- \$75 key card required for property building access

AMENITIES

- Limited Spring 2022 availability (call for details)
- Fully furnished apartments
- On-site courtesy officers
- 24-hour surveillance monitoring
- Gated community
- Resort-style pool with cabanas, outdoor kitchen, and Zen garden
- 24-hour computer and printing lab
- Package concierge
- Community room, study areas, and dedicated conference rooms
- Coffee bistro bar and vending machines on property
- 24-hour fitness center
- Sauna, steam room, and massage room
- Indoor and outdoor recreation space with bowling lanes, golf simulator, and cornhole
- Individual pantries for each resident
- Granite countertops, slate appliances, woodstyle flooring, and walk-in closets

LOCATION

Located off of N. Econlockhatchee Tr., 6.5 miles southeast of campus

FINANCIAL QUALIFICATION

Bank statements or pay stubs to prove income 5 times the monthly rent

APPLICATION FEES

\$75 application fee, \$250 (non-refundable) administrative fee

SECURITY DEPOSIT

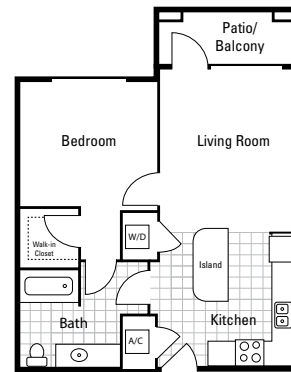
\$295 minimum up to 1 month's rent based on proof of income / guarantor income.

PET DEPOSIT/FEES

\$350 (non-refundable) pet fee for dogs, \$300 (non-refundable) pet fee for cats, \$25/month pet rent per pet
Limit 2 pets per apartment - Breed restrictions apply

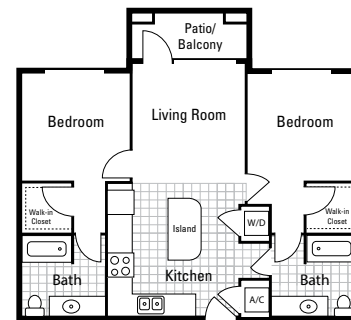
HOURS

M-F 9 to 6 Sat 10 to 5
Sun Closed**



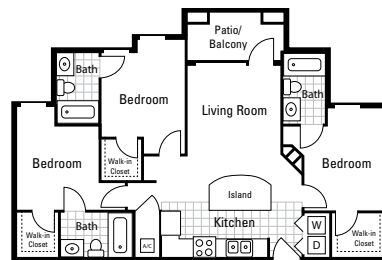
GRADUATE

1 Bedroom, 1 Bath
672 sq. ft.
Starting at \$1849*



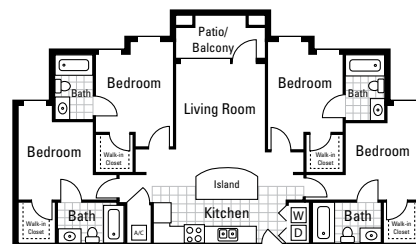
ATLAS

2 Bedroom, 2 Bath
940 sq. ft.
Starting at \$1299* per person



OAKRIDGE

3 Bedroom, 3 Bath
1147 sq. ft.
Starting at \$1119* per person



MATADOR

4 Bedroom, 4 Bath
1393 sq. ft.
Starting at \$1049* per person

16

Venue at Winter Park

5 Autumn Breeze Way, Winter Park, FL 32792
407.972.0272

WEBSITE AND EMAIL

www.venueatwinterpark.com winterpark@vidaltalife.com

UTILITIES AND FEATURES

- Flat rate for water/sewer/pest control
- Valet trash \$30/month
- Washer/dryer available in all 2- and 3-bedroom apartments
- Renters insurance required

AMENITIES

- Renovated apartments
- USB charging stations in every apartment
- Dog park
- 3 resort-style swimming pools
- Outdoor kitchens
- Clubhouse with catering kitchen and lounge
- Wi-Fi café with computers
- 24-hour fitness center with spin room
- Package center with 24-hour access

LOCATION

Located off of Semoran Blvd., 1.1 miles north of campus

FINANCIAL QUALIFICATION

Bank statements or pay stubs to prove income 5 times the monthly rent OR for 3-bedroom units only I20 can suffice with financial information provided

APPLICATION FEES

\$75 Per applicant, \$200 Administration fee

SECURITY DEPOSIT

\$2000 up front security deposit (portion up front and then monthly payments) or Jetty Surety Bond.

PET DEPOSIT/FEES

\$350–600 pet fee per pet
\$250–600 pet deposit (refundable) per pet
\$25–45/month pet rent per pet, up to 2 pets

ADDITIONAL INFORMATION

Online payments accepted via credit, debit, and e-check
Virtual and in-person tours available

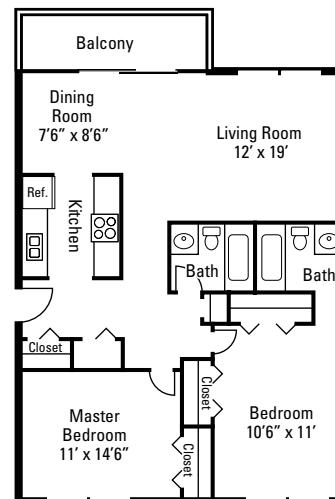
HOURS

M–F 8:30 to 5:30 Sat 10 to 5 Sun Closed



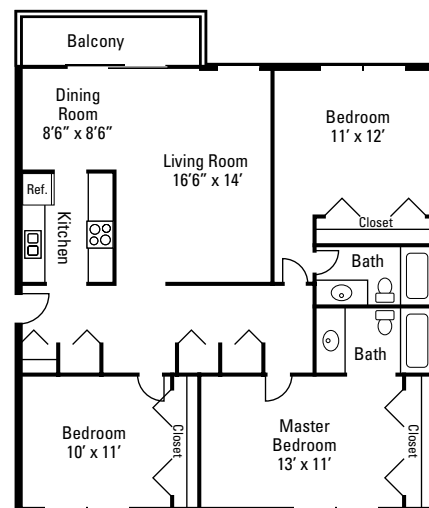
SABLE

1 Bedroom, 1 Bath
720 sq. ft.
Starting at \$1175*
\$137.20 flat rate for water/sewer/pest control



MAPLE

2 Bedroom, 2 Bath
976 sq. ft.
Starting at \$1366*
\$151.20 flat rate for water/sewer/pest control



LAUREL

3 Bedroom, 2 Bath
1270 sq. ft.
Starting at \$1785*
\$171.20 flat rate for water/sewer/pest control

17

Vintage Winter Park

7490 Dwell Well Way, Winter Park, FL 32792
407.382.8002

WEBSITE AND EMAIL

www.vintagewinterpark.com
vintagewinterpark@ram-mgt.com

UTILITIES AND FEATURES

- Flat rate for water/sewer/ valet trash/pest control/ cable/Internet—utility package based on apartment size
- Full-size washer/dryer in every apartment
- Renters insurance required

AMENITIES

- Luxury modern apartment homes
- Elevator access in all buildings
- Bike lockers and repair center
- Fully gated community
- Clubhouse with billiards, coffee center, and wine station
- Community offers high-speed Internet and cable
- Resort pool with hammock garden
- 24-hour virtual fitness training center by Wellbeats
- Cardio room and open-air yoga meditation lawn
- Private conference center
- Electric car-charging station
- Bark park and pet spa
- Community-wide Wi-Fi service

LOCATION

Located on Goldenrod Rd., 1.6 miles northeast of campus

APPLICATION FEES

\$100 per applicant/guarantor
\$300 administrative fee per apartment

MOVE-IN COSTS

Minimum of \$500 security deposit with approved credit and rental verification

PET DEPOSIT/FEES

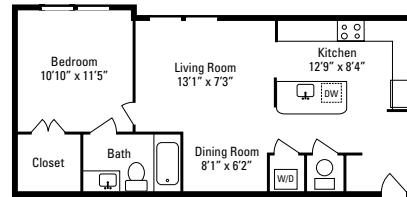
\$350 (non-refundable) pet deposit for 1 pet; \$550 for 2 pets; \$25/month pet rent per pet; No weight limit—breed restrictions apply

ADDITIONAL INFORMATION

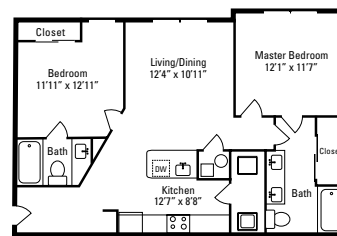
Call for more information about Full Sail student specials. Online payments accepted via credit, debit, and e-check with applicable fees

HOURS

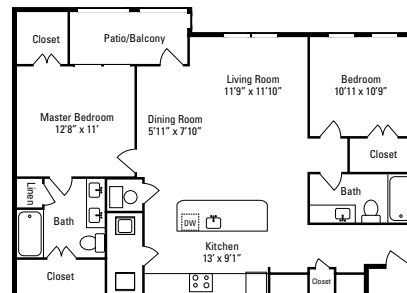
M-F	9 to 6	Sat	10 to 5
		Sun	Closed



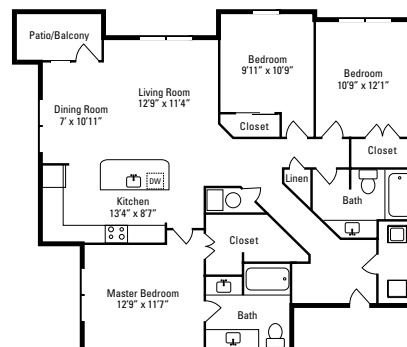
PHELPS
Starting at \$1718*
\$140 utility package



MORSE
2 Bedroom, 2 Bath
952 sq. ft.
Starting at \$2075*
\$150 utility package



MEAD
2 Bedroom, 2 Bath
1158 sq. ft.
Starting at \$2375*
\$150 utility package



CORNESS
3 Bedroom, 2 Bath
1399 sq. ft.
Starting at \$2520*
\$155 utility package

**Prices change daily based on current market availability. Please call complex for current pricing. Refer to Apartment Information section at the front of the guide for more info.*

18

Westmount at Winter Park

1701 Lee Rd., Winter Park, FL 32789
407.628.0301

WEBSITE AND EMAIL

www.westmountwinterpark.com
westmountwp@greystar.com

UTILITIES AND FEATURES

- Water/sewer/trash not included in rent
- Washer/dryer included in some apartments
- Reserved parking \$25/month

AMENITIES

- Stainless steel appliances in some apartments
- Microwave included
- Screened-in patios and balconies
- Resort-style sundeck and pool
- Hammock park with barbecue grill
- Pet park
- 24-hour fitness center

LOCATION

Located off of Lee Rd., 6.5 miles west of campus

FINANCIAL QUALIFICATION

Guarantor and applicants need paystubs 3x monthly rent or 6 months of bank statements.

APPLICATION FEES

\$75 per applicant/guarantor. Waived for Full Sail Students, \$100 reservation fee, \$200 administration fee (half off for Full Sail students).

SECURITY DEPOSIT

Minimum \$200 up to 1 month's Rent (refundable) based on income.

PET DEPOSITS / FEES

\$300–600 pet fee, up to 2 pets; \$20/month pet rent per pet
Breed restrictions apply

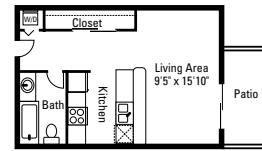
ADDITIONAL INFORMATION

Online payments accepted—credit cards accepted with a \$24.99 service fee; Optional wood-vinyl flooring and lake views available; E-check payments accepted—no service fee

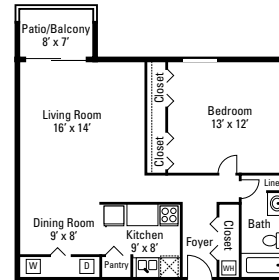
HOURS

M–F 9 to 6, Sat 10 to 5, Sun Closed

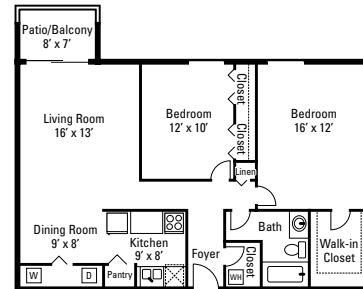
*Prices change daily based on current market availability. Please call complex for current pricing. Refer to Apartment Information section at the front of the guide for more info



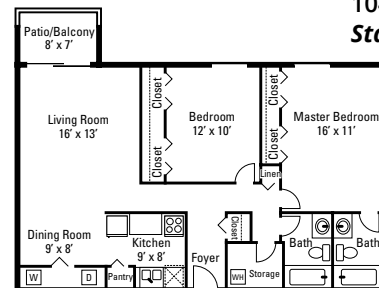
THE ROLLINS
Studio
409 sq. ft.
Starting at \$1299*



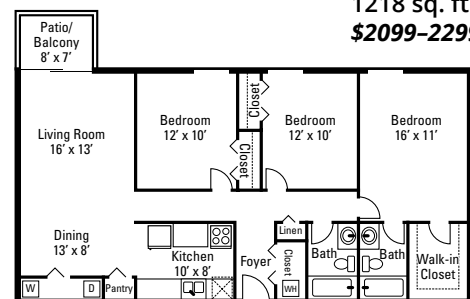
THE MORSE
1 Bedroom, 1 Bath
776 sq. ft.
\$1475–1550*



THE KNOWLES
2 Bedroom, 1 Bath
997 sq. ft.
Starting at \$1699*



THE MELBOURNE
2 Bedroom, 2 Bath
1047 sq. ft.
Starting at \$1899*



THE PARK
3 Bedroom, 2 Bath
1218 sq. ft.
\$2099–2299*

19

Whisper Lake

3250 Whisper Lake Lane, Winter Park, FL 32792
+1.407.677.0005 +1.407.677.0298 fax

WEBSITE AND EMAIL

www.whisperlakeapts.com
leasing@whisperlakeapts.com

AMENITIES

- Grocery delivery service on property twice a month (www.schwans.com)
- Game room
- Business center with printers and high-speed Internet
- Spectacular waterfront swimming pool
- Lighted tennis and racquetball courts
- Volleyball court
- 24-hour express maintenance
- 24-hour fitness center
- Washer/dryer connections in all 2-bedroom units
- 2 clothes care centers
- Basketball court
- Scenic views of the lake

LOCATION

Located off of Semoran Blvd., 1 mile south of campus

FINANCIAL QUALIFICATION

Requires 3x monthly rent in proof of income from bank statement/paystubs

APPLICATION FEES

\$75 application fee per person or married couple
\$250 administration fee

SECURITY DEPOSIT

Two month of rent deposit minimum depending on income

PET DEPOSITS / FEES

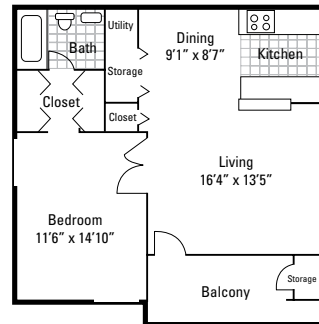
\$400 (non-refundable) fee
Maximum 24 inches tall, breed restrictions apply
Maximum 2 pets per unit

ADDITIONAL INFORMATION

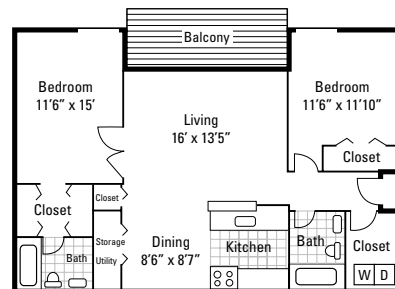
\$53-63 flat rate for water/sewer, depending on apartment size

HOURS

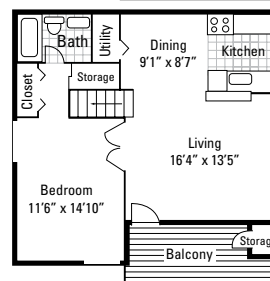
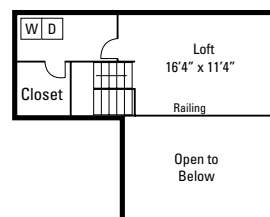
M-F 8:30 to 5:30, Sat 10 to 5, Sun 12 to 5



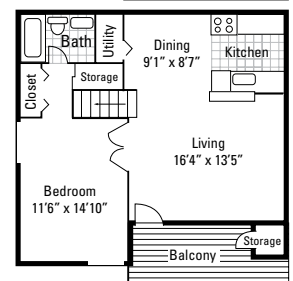
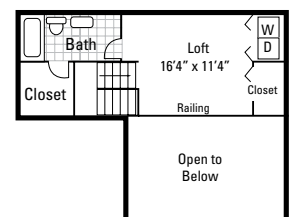
GARDEN UNIT
1 Bedroom, 1 Bath
750 sq. ft.
\$1430-1560*



GARDEN UNIT
2 Bedroom, 2 Bath
1050 sq. ft.
\$1730-1845*



LOFT
2 Bedroom, 1 Bath
1000 sq. ft.
\$1600-1725*



LOFT
2 Bedroom, 2 Bath
1000 sq. ft.
\$1670-1780*

20

Winter Park Woods

349 Scottsdale Square, Winter Park, FL 32792
321.404.6330

WEBSITE AND EMAIL

www.winterparkwoodsapartments.com
wpwoodsteam@rentprosper.com

UTILITIES AND FEATURES

- Water/trash/sewer/pest control not included in rent
- Washer/dryer included in most units
- Renters insurance required

AMENITIES

- Within walking distance to campus
- Located on same side of road as campus; no crossing of major highways and roads needed
- Modern, trendy architecture distinctive from all local apartments
- Spacious and unique 2-story lofts and townhouse-style apartment condos available
- Tranquil pool with lounge seating and outdoor grills
- Mature trees and serene woods
- Private patios

LOCATION

Located off of S. Semoran Blvd., 0.5 miles south of campus and University Blvd.

APPLICATION FEES

\$75 application fee; \$100 administration fee

MOVE-IN COSTS

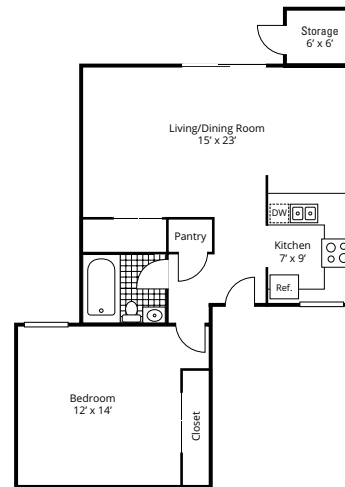
\$500 standard or higher security deposit (refundable)—dependent on approved credit

PET DEPOSITS / FEES

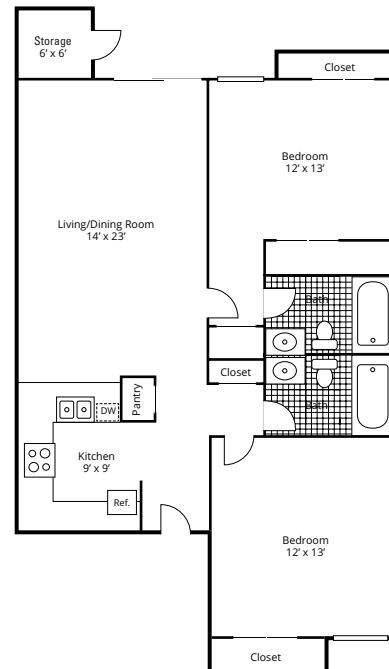
\$25–100 pet processing fee; \$25–100/month pet rent; Maximum of 1 pet; Fees/rent dependent upon the pet screening report; approved support animals have no fees/rent; Visit rentprosper.petscreening.com for more information; Breed restrictions apply

HOURS

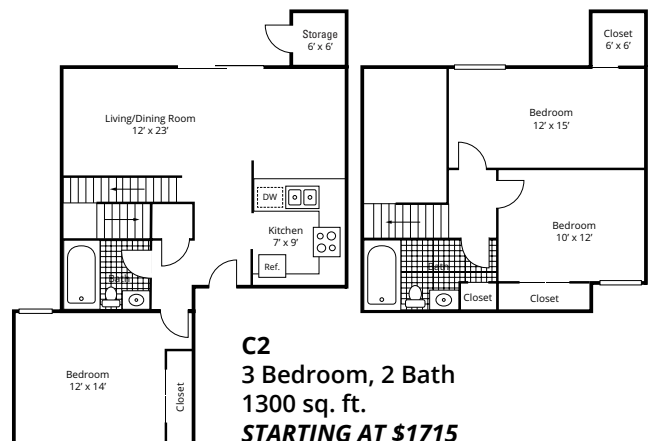
M–F 9 to 5 Sat By appointment
Sun Closed



A3
1 Bedroom, 1 Bath
785 sq. ft.
STARTING AT \$1285



B2
2 Bedroom, 2 Bath
1020 sq. ft.
STARTING AT \$1595



C2
3 Bedroom, 2 Bath
1300 sq. ft.
STARTING AT \$1715



WHY HOMESTAY ANYWHERE?



Homestay Anywhere offers fully furnished dorm-style apartments shared with other students. Private and shared bedrooms in shared housing includes all basic utilities, housewares, in-unit washers and dryers, and parking. An additional perk is that Homestay Anywhere uses individual leases; if your roommate moves out, your rent doesn't change.

DETAILS AND PRICING

1. Shared Master Bedroom - \$750	Bedroom shared with 1; Bathroom shared with 1
2. Private Standard Bedroom - \$1,000	Private bedroom; Bathroom shared with 1-2
3. Private Master Bedroom - \$1,250	Private bedroom; Private bathroom
\$500 – Application Fee	\$500 – Security Deposit

APPLY ONLINE AT HOMESTAYANYWHERE.COM OR CALL 786-999-2151

Title IX

Full Sail University complies with the guidelines and requirements of the Title IX, Education Amendments of 1972 and has adopted procedures and policies to address allegations of sexual violence as outlined under Title IX. The university encourages any student who experiences sexual violence/harassment to report it and request appropriate interim measures and processes that provide access to the educational program without regard to sex. The university prohibits sexual violence/harassment occurring off campus, as well as on campus, in accordance with Title IX.

Title IX is a federal law that prohibits sex-based discrimination in all activities and programs of educational institutions receiving federal funds.

Unlawful Discriminatory Behaviors Under Title IX

- **Sexual Harassment**
(unwelcome sexual advances, requests for sexual favors, and other verbal or physical conduct of a sexual nature)
- **Sexual Misconduct**
(rape, sexual assault, sexual battery, sexual exploitation, and other forms or non-consensual sexual activity)
- **Stalking**
(repeatedly following, harassing, threatening or intimidating including by telephone, mail, electronic communication, or social media)
- **Dating Violence**
(including emotional, verbal, and economic abuse without the presence of physical abuse)
- **Domestic Violence**
(including emotional, verbal and economic abuse without the presence of physical abuse)
- **Retaliation**
(adverse employment, academic, or other action against anyone reporting or participating in an investigation of Title IX allegations)

Reporting

Members of the university community who believe that a Title IX violation may have occurred should discuss their concerns and/or file a complaint with the university's Title IX Coordinator:

Shayne Cade, Director of Compliance & Title IX Coordinator

3300 University Boulevard, Winter Park, FL 32792
407.679.0100
scade@fullsail.com

University Title IX deputy Coordinators are:

Debbie Mills, Director of Student Affairs

3300 University Boulevard
Winter Park, FL 32792
dmills@fullsail.com

Debby Wiskus, Director of Human Resources

3300 University Boulevard
Winter Park, FL 32792
dwiskus@fullsail.com

Area RETAIL

Area Grocers/Pharmacies

Walmart Neighborhood Market

2271 N. Semoran Blvd.
Winter Park, FL 32807
407.551.5160

Aldi

6766 Aloma Ave.
Winter Park, FL 32792
407.677.0644

Walgreen's Drug Store

7403 Aloma Ave.
Winter Park, FL 32792
Store: 407.677.8586
Pharmacy: 407.677.8589

CVS Pharmacy

10051 UNIVERSITY BLVD.
WINTER PARK, FL 32792
407.679.4900

Publix Supermarket

4000 N. GOLDENROD RD.
WINTER PARK, FL 32792
407.671.0211

Sprouts Farmers Market

1999 ALOMA AVE.
WINTER PARK, FL 32792
888.577.7688

Whole Foods

1030 N. ORLANDO AVE.
WINTER PARK, FL 32789
407.377.6040

Lotte Plaza | Korean Supermarket

3191 W COLONIAL DR.
ORLANDO, FL 32808
407-499-1115

Shopping Directory

Target

3700 N. GOLDENROD RD.
WINTER PARK, FL 32792
407.670.0388

Walmart Supercenter

1241 SEMORAN BLVD., UNIT 101
CASSELBERRY, FL 32707
407.679.0377

Altamonte Mall

451 E. ALTAMONTE DR.
ALTAMONTE SPRINGS, FL 32701
407.630.1211

IKEA

4092 EASTGATE DR.
ORLANDO, FL 32839
407.355.3155

Mall at Millennia

4200 CONROY RD.
ORLANDO, FL 32839
407.363.3555

Florida Mall

8001 S. ORANGE BLOSSOM TR.
ORLANDO, FL 32809
407.851.7234

Oviedo Marketplace

1700 OVIEDO MARKETPLACE BLVD.
OVIEDO, FL 32765
407.977.2400

Park Avenue

WINTER PARK, FL 32789
AVENUE OF SHOPS IN DOWNTOWN WINTER PARK
WINTER PARK CHAMBER OF COMMERCE
407.644.8281

**Prices are provided for reference only and may change based on availability, time of year, or other factors.
Please call complex for current pricing.*



FULL SAIL UNIVERSITY

Near Orlando, FL • Tel: +1.407.679.6333 • fullsail.edu
3300 University Boulevard, Winter Park, FL



Financial aid available for those who qualify • Career development assistance • Accredited University, ACCSC

To view consumer disclosures, please visit fullsail.edu/gedt.

© 2025 Full Sail, LLC. All rights reserved. The terms "Full Sail," "Full Sail University," and the Full Sail University logo are either registered service marks or service marks of Full Sail, LLC.

FEB2024